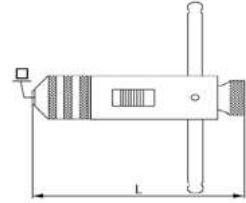


## Tapratels

- Voor rechte en linkse schroefdraad.
- Uitvoering: staal



size	metric	inch-sizes		L1	bestelreferentie
1	M 3 - M 10	1/8 - 3/8	2,4 - 5,5	85	904001
2	M 5 - M 12	7/32 - 1/2	4,5 - 8,0	100	904002
10	M 3 - M 10	1/8 - 3/8	2,4 - 5,5	250	905001
20	M 5 - M 12	7/32 - 1/2	4,5 - 8,0	300	905002

Bestelvoorbeeld: 2 stks. 905001

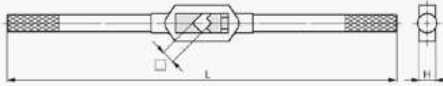
## Wringijzers din 1814 - zamac



### Code 5430

size	metric	inch-sizes	pipe-threads		L1
0	M 1 - M8	1/16 - 1/4		2,0 - 5,0	130
1	M 1 - M10	1/16 - 3/8	G 1/8	2,0 - 6,3	176
1.1/2	M 1 - M12	1/16 - 1/2	G 1/8	2,1 - 8,0	176
2	M 4 - M12	5/32 - 1/2	G 1/8	3,0 - 9,0	280
3	M 5 - M20	7/32 - 3/4	G 1/8 - G 1/2	4,9 - 12	380
4	M 11 - M27	7/16 - 1"	G 1/4 - G 3/4	5,5 - 16	505
5	M 13 - M32	1/2 - 1.1/4	G 1/4 - G 1"	7,0 - 20	700
6	M 18 - M42	3/4 - 1.1/2	G 1/2 - 1.1/4"	11,0 - 24	1000

Bestelvoorbeeld: 2 stks. 5430-2



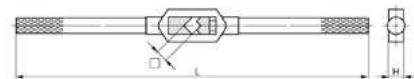
## Wringijzers din 1814 - staal



### Code 5430ST

size	metric	inch-sizes	pipe-threads		L1
0	M 1 - M 8	1/16 - 1/4		2,0 - 5,0	130
1	M 1 - M 10	1/16 - 3/8		2,0 - 6,3	180
1.1/2	M 1 - M 12	1/16 - 1/2	G 1/8	2,1 - 8,0	205
2	M 4 - M 12	5/32 - 1/2	G 1/8	3,0 - 9,0	280
3	M 5 - M 20	7/32 - 3/4	G 1/8 - G 1/2	4,9 - 12	380
4	M 11 - M 27	7/16 - 1"	G 1/4 - G 3/4	5,5 - 16	500
5	M 13 - M 32	1/2 - 1.1/4	G 1/4 - G 1"	7,0 - 20	700
6	M 18 - M 42	3/4 - 1.1/2	G 1/2 - G 1.1/4	11 - 24	1000
7	M 27 - M 52	1.1/8 - 2"	G 3/4 - G 1.3/4	16 - 32	1250
8	M 27 - M 64	1.1/8 - 3"	G 3/4 - G 3"	16 - 40	1250

Bestelvoorbeeld: 2 stks. 5430ST-1

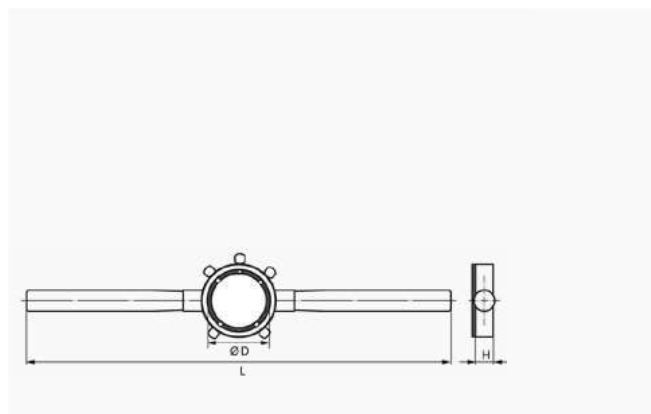


## Snijramen - DIN 225 - zamac

Code 5440

Ø D x H	metric	inch-sizes	L1
16 x 5	M 1 - M 2,6	BSW 1/16 - BSW 3/32	160
20 x 5	M 3 - M 4	BSW 1/8 - BSW 5/32	200
20 x 7	M 4.5 - M 6	BSW 3/16 - BSW 1/4	200
25 x 9	M 7 - M 9	BSW 5/16	224
30 x 11	M 10 - M 11	BSW 3/8 - BSW 7/16	280
38 x 10	MF 12 - MF 15	G 1/4	315
38 x 14	M 12 - M 14	BSW 1/2 - BSW 9/16	315
45 x 14	MF 16 - MF 20	G 3/8-1/2	450
45 x 18	M 16 - M 20	BSW 5/8 - BSW 13/16	450
55 x 16	MF 22 - MF 26	G 5/8 - G 3/4	560
55 x 22	M 22 - M 24	BSW 7/8 - BSW 1"	560
65 x 18	MF 27 - MF 36	G 7/8 - G 1"	630
65 x 25	M 27 - M 36	BSW 1.1/8 - BSW 1.3/8	630

Bestelvoorbeeld: 1 stk. 5440 - 55 X 16

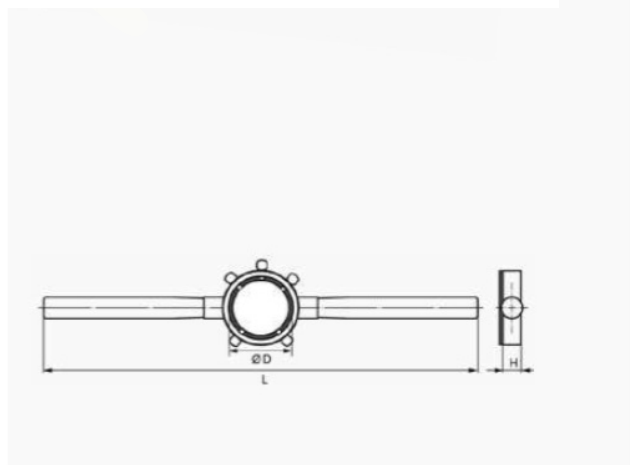


## Snijramen - DIN 225 - staal

Code 5440ST

Ø D x H	metric	inch-sizes	L1
45 x 18	M 16 - M 20	BSW 5/8 - BSW 13/16	450
55 x 22	M 22 - M 24	BSW 7/8 - BSW 1"	560
65 x 25	M 27 - M 36	BSW 1.1/8 - BSW 1.3/8	630
75 x 20	MF 38 - MF 42	G 1.1/8 - G 1.1/4	800
75 x 30	M 38 - M 42	BSW 1.1/2 - BSW 1.5/8	800
90 x 22	MF 45 - MF 52	G 1.3/8 - G 1.5/8	900
90 x 36	M 45 - M 52	BSW 1.3/4 - BSW 2"	900
105 x 22	MF 54 - MF 63	G 1.3/4 - G 2"	975
105 x 36	M 54 - M 63	BSW 2.1/4	975
120 x 22	MF 64 - MF 71	G 2.1/4 - G 2.3/4	956
120 x 36	M 64 - M 71	BSW 2.1/2 - BSW 2.3/4	956
130 x 25		G 3"	966
130 x 36			966
140 x 22			976
150 x 25		G 3.1/2"	986
160 x 25		G 4"	996

Bestelvoorbeeld: 1 stk. 5440ST - 45 X 18



## Verlengstukken DIN377, vierkant DIN 10

- Te gebruiken in combinatie met tappen en ruimers.

### Code 9377

<input type="checkbox"/>	L1	metric acc. to DIN 352
2,1	60	<b>M 1 - M 2,6</b>
2,4	70	
2,7	80	<b>M 3</b>
3,0	90	<b>M 3,5</b>
3,4	95	<b>M 4</b>
3,8	100	
4,3	105	
4,9	110	<b>M 4,5 - M 8</b>
5,5	115	<b>M 9 - M 10</b>
6,2	120	<b>M 11</b>
7,0	125	<b>M 12</b>
8,0	125	
9,0	130	<b>M 14 - M 16</b>
10,0	140	
11,0	150	<b>M 18</b>
12,0	155	<b>M 20</b>
13,0	165	
14,5	175	<b>M 22 - M 24</b>
16,0	180	<b>M 27</b>
18,0	200	<b>M 30</b>
20,0	220	<b>M 33</b>
22,0	220	<b>M 36</b>
24,0	235	<b>M 39 - M 42</b>
26,0	250	
29,0	265	<b>M 45 - M 48</b>
32,0	285	<b>M 52</b>

Bestelvoorbeeld: 1 stk. code 9377 - 7.0

